

# USA Porcelain Pavers



**CANCOS**  
TILE & STONE

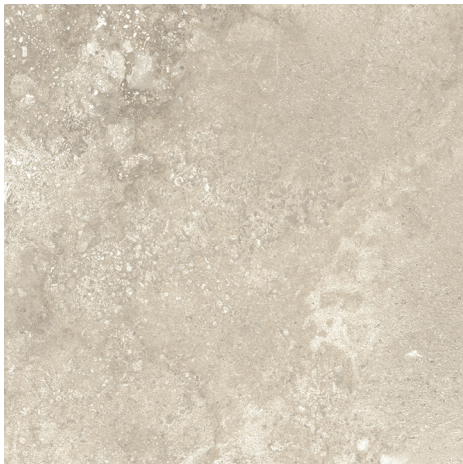




*Stone* CREAMSTONE · MOONSTONE  
NON-STOCK / SPECIAL ORDER (1-2 WEEKS)



PAVSNCR24



creamstone

| 24 x 24 |

PAVSNMO24



moonstone

| 24 x 24 |

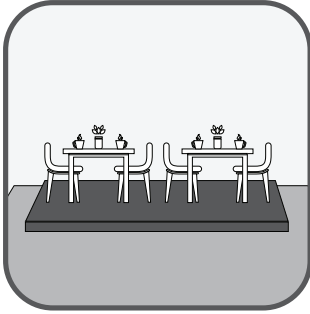
# technical characteristics of 2CM PORCELAIN PAVERS?

STANDARDS

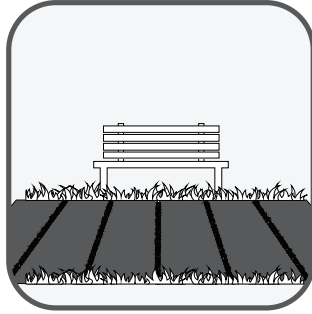
**CANCOS**  
FILE AND STONE

ISO 10545-3	Water absorption	$E < = 0,5 \%$	0,05 %
ISO 10545-9v	Thermal shock resistance	Requested	Complies with standard
ISO 10545-12	Frost resistance	Requested	Complies with standard
ISO 10545-6	Abrasive wear	$< 175 \text{ mm}^2$	139 $\text{mm}^2$
ISO 10545-2	Thickness	$\pm 5,0 \%$ MAX	Complies with standard
	Length and width	$\pm 0,6 \%$ MAX	Complies with standard
ISO 10545-4	Bending strength	$S_p > / = 7,5 \text{ mm}$ $S > / = 1300 \text{ N}$	S 10.000 N sp. 15 S 13.600 N sp. 20
ISO 10545-14	Resistance to stain	-	5
ISO 10545-13	Chemical resistance	UB min.	UA ULA UHA
ISO 10545-8	Coefficient of linear thermal-expansion	-	60 $6,3 \times 10 \text{ c}'$
ISO 10545-5	Impact resistance	-	0,88
EN 12825	Static load	-	Centre 9,6 Kn Centre point of sides 6,5 Kn Diagonal 8,19 Kn (CLASSE 3)
	Dynamic load capacity - hand object impact test	-	Test not passed
	Dynamic load capacity - soft object impact test	-	Test passed
EN 1339	Bending strength - breaking force in N	Kn 14,38	classe 14
ENV 12633	Pendulum Test - Slip resistance	$> / = \text{CL1}$	CL 2
DIN 51130	Slip resistance	-	R11
DIN 51097	Slip resistance	-	A + B + C min.
DIN 51094	Color resistance to light	Tiles must not produce noticeable colour variation	Resistant
DM 236/89 B.C.R.A.	Slip resistance	-	$> 0,40$
ASTM 1028-07 BOT 3000	Slip resistance	-	$> 0,60 \text{ WET}$ $> 0,60 \text{ DRY}$ $> 0,42$
EN 13501-1	Fire resistance	-	A1 - A1 FL

*where to install*  
**2CM PORCELAIN PAVERS**



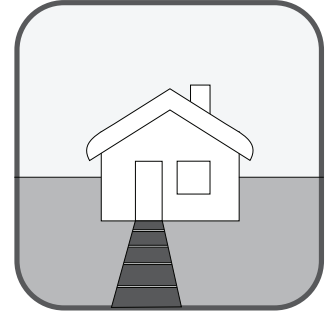
Sidewalk cafes



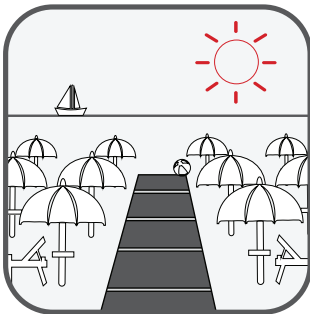
Walkways and pathways



Gardens and patios



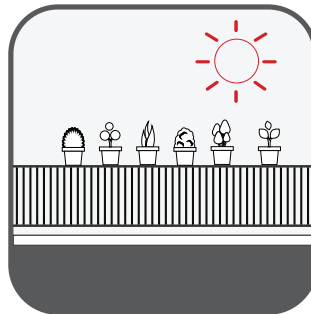
Garden paths



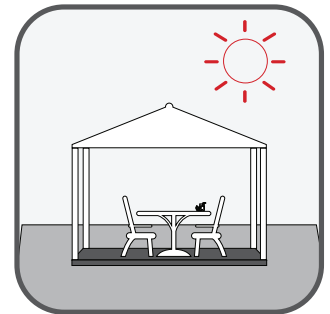
Beach resorts



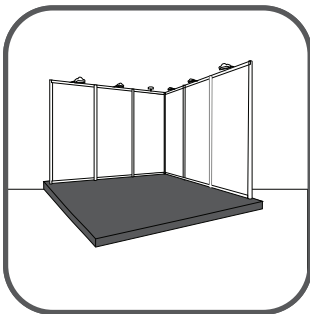
Swimming-pools



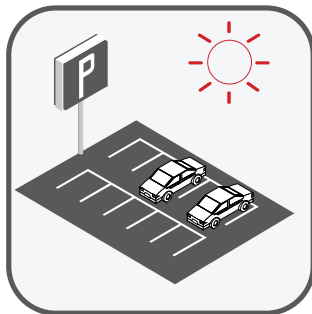
Terraces and balconies



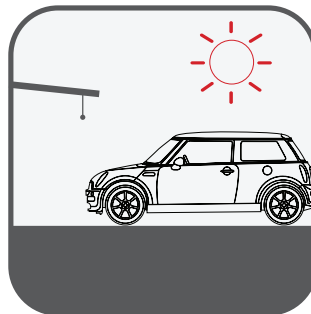
Gazebos



Exhibitions and events

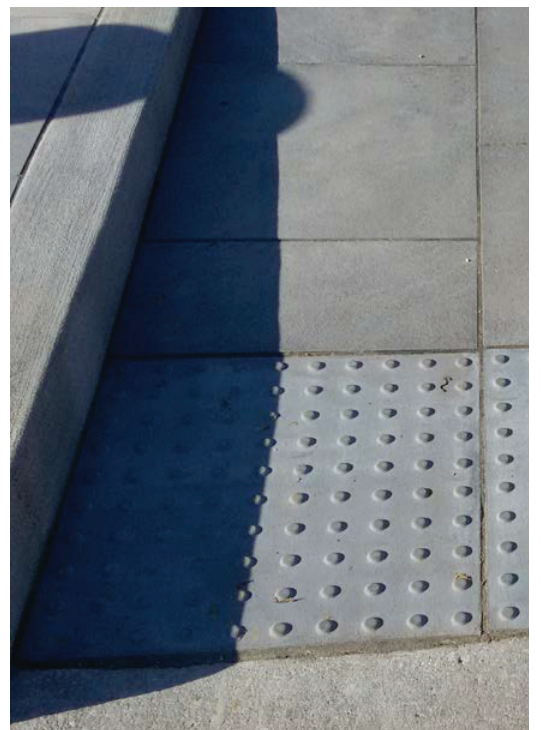
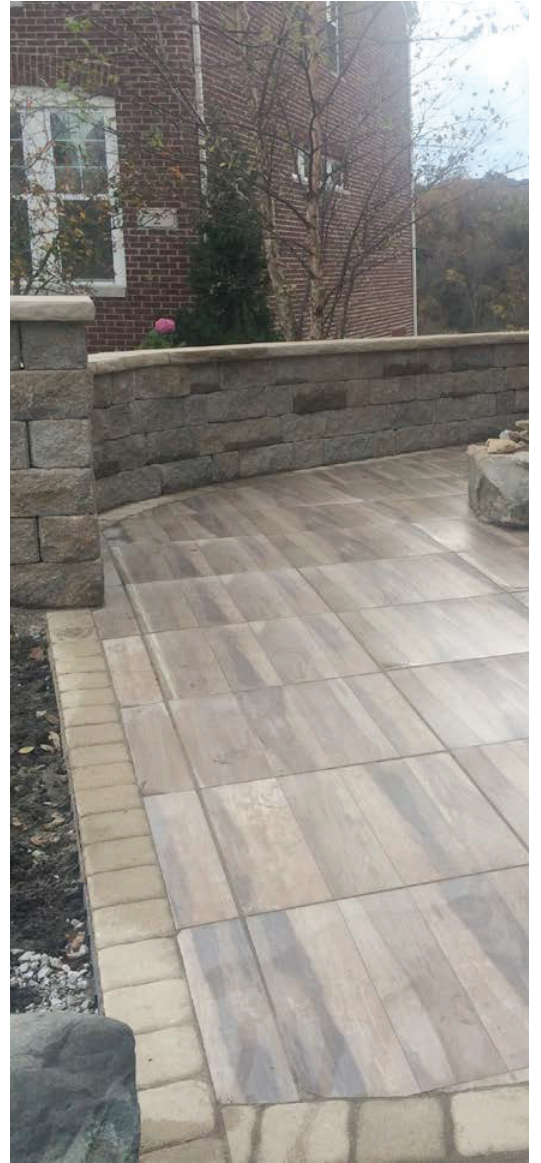


Public parks

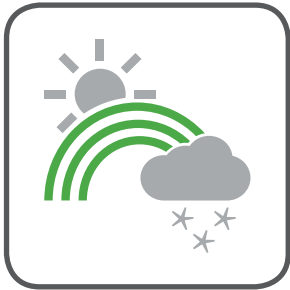


Public parkings





# why choose 2CM PORCELAIN PAVERS?



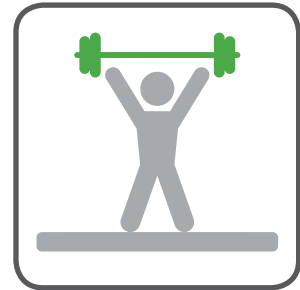
Thermal shock resistant.  
(-40°F - 210°F)



Superior in fire resistance  
and durability to wood tiles



Easy to clean. Stain,  
chemical and salt resistant



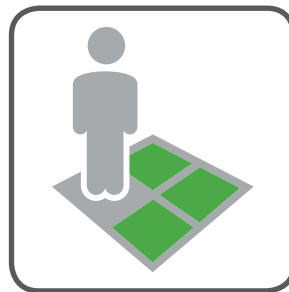
Superior in strength and  
impact resistance to  
ceramic tiles (supports over  
2000lb), lighter and easier  
to handle than concrete  
blocks



Virtually no maintenance



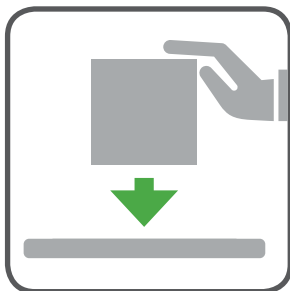
Slip resistant and quick  
draining



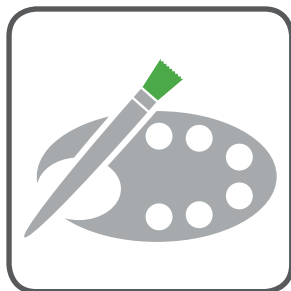
Easy to install



Removable and reusable  
POPA 2.0 is ideal both for  
temporary flooring and for  
permanent flooring



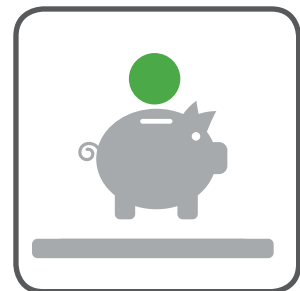
Versatile installation.  
Various installation methods  
including pedestal set,  
gravel and grass set.  
They offer endless  
opportunities for landscape  
design creativity in both  
domestic and commercial  
applications.



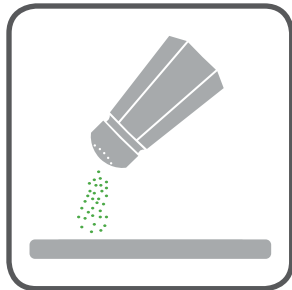
Fade resistant



Available in a broad range  
of colors/styles



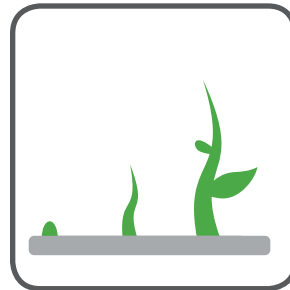
Massive over life cost  
savings more cost effective  
than grating or grid  
structures for elevated  
paving installations



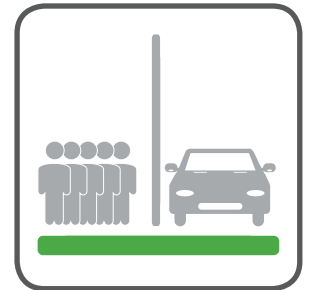
Resistant to salt corrosion.



Resistant to attack from mould, moss and verdigris treatments.



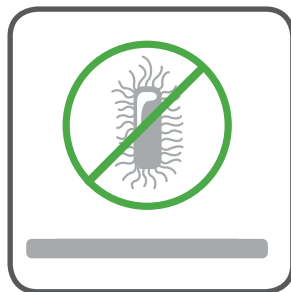
Resistant to efflorescence and other marks.



Durable: resistant to heavy vehicle and pedestrian traffic.



Frost-proof.



Hypoallergenic. No VOC.



Easy to sterilize.



Eco-friendly maintenance.



Easy to clean.



Recyclable and ecological.



New solution in extra-thick porcelain stoneware for outdoor trilling. 2 cm thick, colored fine porcelain stoneware slabs obtained from atomizing high-class clays, quartzes and metal oxides pressed at 400 kg/cm<sup>2</sup>, completely sintered at a temperature of 1200°C and then squared using a system of abrasive grinders.



*\*The marketing name for this product is property of Cancos Tile Corp.  
This same product may be marketed under different names.\**